

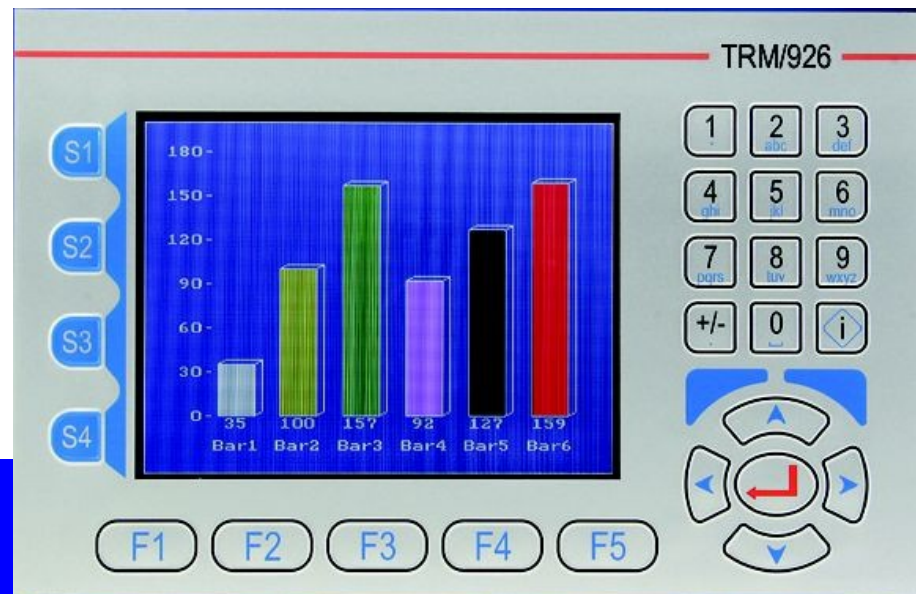


TRM/926 Open Frame Industrial PC

Powerful Vortex86DX 32 bit x86 SoC,600Mhz Embedded CPU

- New display, 5.7 VGA-size with 18-bit digital RGB interface full color, LED backlight technology
- Frontpanelkeyboard with Numeric/Alphanumeric Key, 4 Softkeys, 5 F-Keys
- High Performance SoC CPU, SSV DIL/Net PC eSOM2586 with x86 Core, LOW Power
- Serial Interface 2x RS232, 1x RS485 (16C550/16C552 compatible)
- Compact Flash socket
- 10/100Mbps Ethernet LAN Interface
- CAN Interface CAN SJA1000 Controller
- USB host port for external USB devices
- PC/104 Extension Bus 8/16bit PC/104 I/O cards
- Embedded Linux 2.6.18 Debian Based + X-Server + Python 2.7 Runtime
- GTK Toolkit + API
- Free programmable for individual applications in automation environment

Linux
for Embedded
Use



Informations and
Details:

AE SYSTEME

www.terminal-systems.de

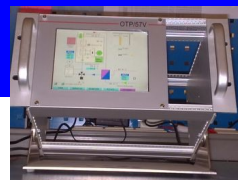
info@terminal-systems.de



OTP57V – Operator Touch Panel

Industrial system, perfect fitting for 19" racks

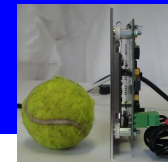
- New display, 5.7 VGA-size with 18-bit digital RGB interface full color, LED backlight technology
- 4 wire touchscreen for direct input at keyboard
- High Performance SoC CPU, SSV DIL/Net PC eSOM2586 with x86 Core, LOW Power
- Serial Interface 2x RS232, 1x RS485 (16C550/16C552 compatible)
- 1X Compact Flash Socket (CF), IDE based
- 10/100Mbps Ethernet LAN Interface
- CAN Interface CAN SJA1000 Controller full CAN support
- 2x USB host port for external USB devices
- GPIO 7-bit general purpose input output signals
- Embedded Linux + Java 6 (J2SE) run time environment
- Free programmable for individual applications in automation environment



Designed for 19" racks



For Touch Applications in roughed environment



Extremely flat design



Informations and
Details:

AE SYSTEME

www.terminal-systems.de

info@terminal-systems.de