

Content

Windows CE Mobile Data - English Version.....	2
Barcode Scanner.....	2
FTP File Transfer:.....	2
Software Description.....	3
User Menu.....	3
Input Mask Approach, Dispatch, Inventory, Order.....	4
Input Mask Relocation.....	5
Data Monitor.....	6
Article Check.....	7
Product ID.....	8
Make it individual: Setup.....	9
Files.....	10
Software: WinCeMobileData-EN.EXE.....	10
Article Host File: /TEMP/ARTIKEL.TXT.....	10
Input Data: /TEMP/DATA.XLS.....	11
Installation at a Handheld Device.....	13
Installation at a standard PC under WIN XP / WIN32.....	13
More Information.....	14

© AE SYSTEME. Ver: Hjw. 20110328.320155

Windows CE Mobile Data - English Version

Latest version: 1.5.1

- Win CE Mobile Data - an universal data capturing software for mobile data terminals based on operating system Windows CE 5.0 / Windows Mobile ©.
- Allows data capturing for most used jobs in stocks and warehousing, e.g. dispatch, approach, inventory or order of goods together with barcode scanning
- Free configurable header texts and labels
- Software available in english or german language. Other translations on request
- Written for Windows CE 5.0 devices (or higher) with QVGA display 240x320 pixel, touch screen, optionally barcode scanner.
- Tested on modern hardware e.g. DATALOGIC MEMOR system
- Supports the upload of an article host file. After scanning article no the system search and show article information from the host file in the display
- Standard data format with XLS / CSV – for easy data processing in office programs. Or for import input data in your favourite ERP software

Some useful hints:

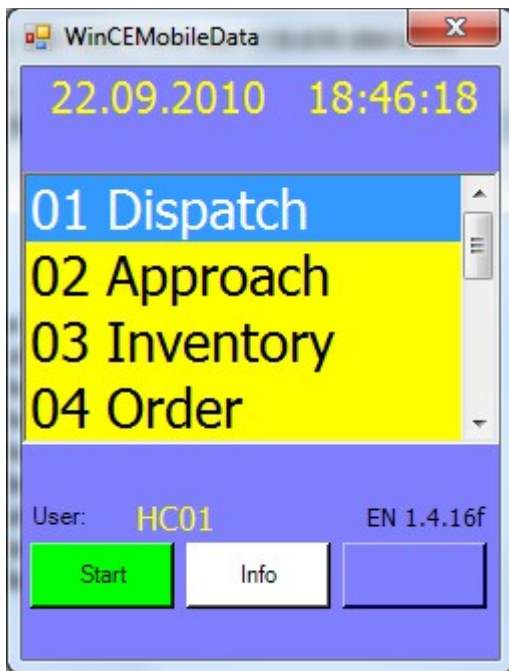
Barcode Scanner

Configure your internal scanner for sending TAB as post delimiter after good reading. This will allow the software to jump to the next input field automatically.

FTP File Transfer:

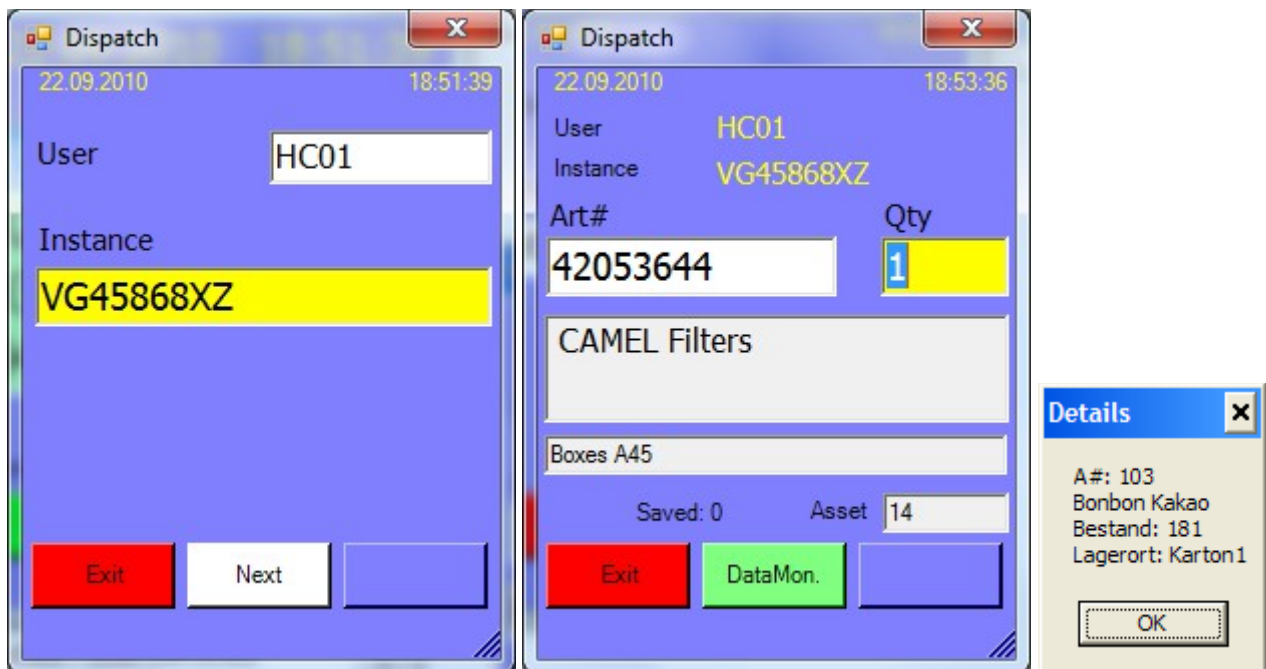
Configure your handheld device as FTP server. This will allow an easy download or upload of files via IP networking, using the FTP transfer protocol. (Otherwise you have to use Microsoft Active Sync.)

Software Description



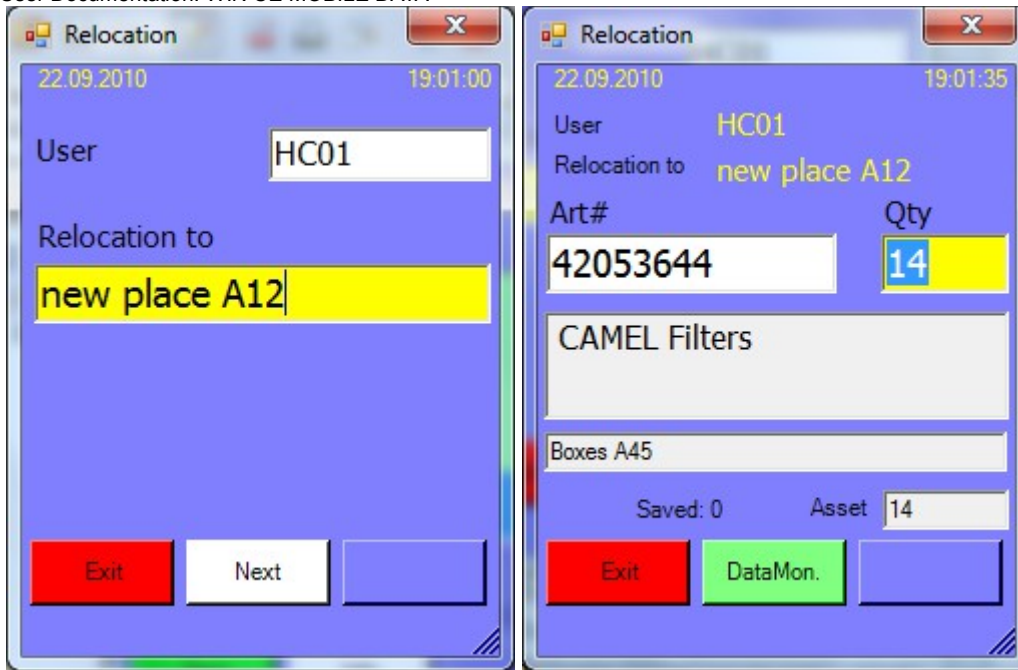
User Menu

- User menu - start base for all your input
- Use UP / DOWN buttons to move inside the list.
- Press enter to activate the highlighted action
- Note: Check current data / time. Make sure the hardware clock is in right settings – all your input data get a time stamp automatically. If your clock has wrong values you will get wrong time stamps. (It is clear isn't?)



Input Mask Approach, Dispatch, Inventory, Order

- Main input menu for APPROACH, DISPATCH, INVENTORY or ORDER.
- Contains two input forms: Addon form and article form
- Addon form supports input user and individual addon input, e.g. instance, invoice no, customer no
- Article form supports input article no.
- If the system contains an article host file ARTIKEL.TXT: after input article no via keyboard or barcode reader the system will search and show more article details from the host file, e.g. article text, location and asset and you can input the qty value
- If the system contains NO article host file, you can input the qty value directly
- Action: Press ENTER after every input. The cursor will start the next field automatically
- Press ESC key to go back
- Configure your barcode reader to send TAB after barcode (POST delimiter) – so the cursor will jump into the next field after barcode reading automatically
- If you are inside QTY input – press F1 on keyboard to show more details about article – if exist



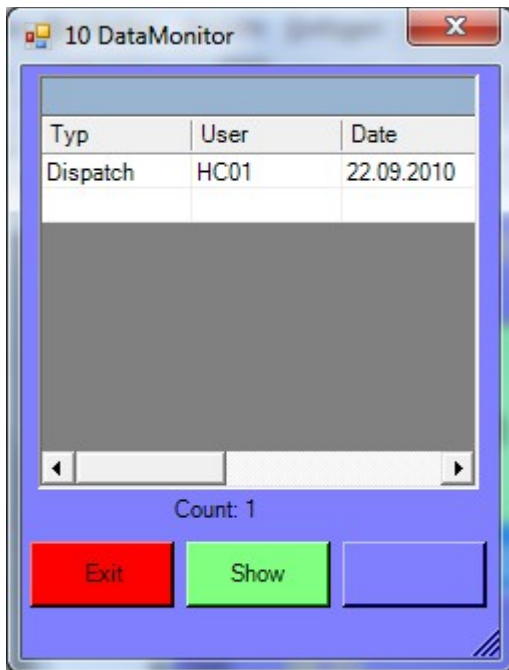
Input Mask Relocation

Relocation indicates two input masks: First specify user and relocation place (where to go) - then an artikelinput menu similar to the standard.

If the system detects an valid article file inside the handheld the article data and current asset will be suggested in value field. The user can press ENTER to accept and relocation for this article or ESC to decline the relocation. Data will be stored with ENTER only.

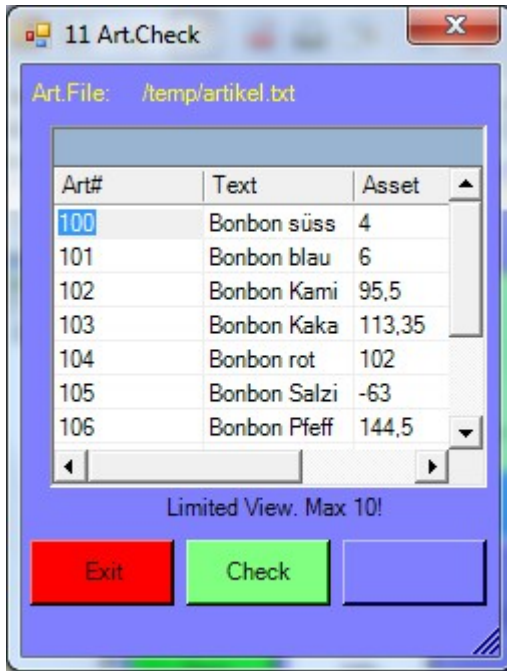
Note: from 1.4.14 you can switch the asset suggest ON / OFF inside setup menu.

If the system does not detect an article file the user can input a value after reading a article no barcode. ENTER will accept, ESC will decline.



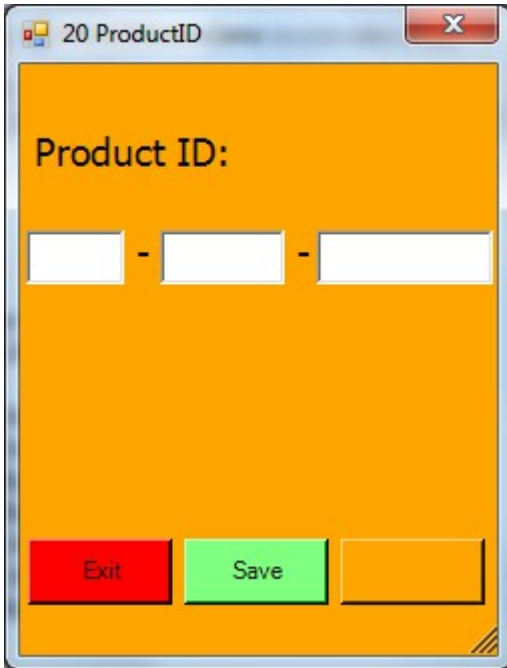
Data Monitor

DATA MONITOR shows you input and saved data inside input file /temp/buchung.xls.



Article Check

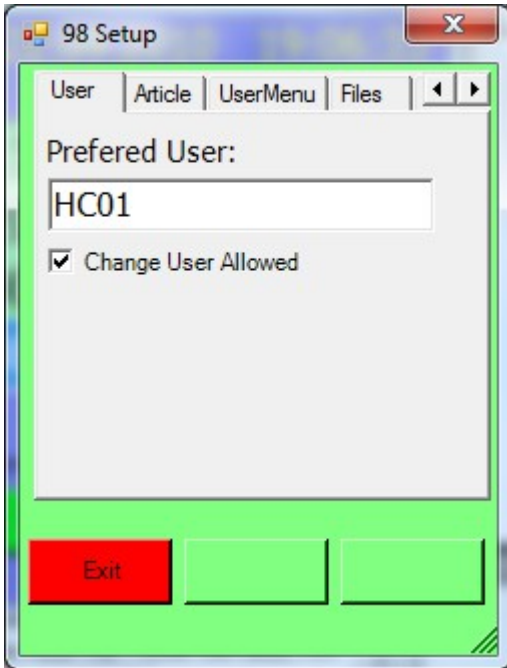
This function checks an uploaded article host file and presents the first 10 article items. It is for your information only. You can use it to verify if your article host file have to correct format for data processing inside the handheld device.



Product ID

Enter your product ID here. This will change the demo version into a full version without any input limits.

Note: you may use one product ID for one handheld device only! E.g. if you have 5 handheld devices using our software, you need 5x product Ids.



Make it individual: Setup

Maybe this will one of the important form for getting started!

Form for setup the software. Define some fields, headers, labels, content of article file, actions and more.

Settings will be saved in INI file inside /TEMP directory.

Files

Software: *WinCeMobileData-EN.EXE*

- EXE file – the program. Put it to your mobile data terminal and start it
- Runs from Windows CE 5.0 (or higher) or at standard Windows PC (WIN32) with DOT.NET (CF) framework
- Needs display from QVGA 240x320 pixels
- EN represents the english language version, otherwise DE is the german language version

Article Host File: */TEMP/ARTIKEL.TXT*

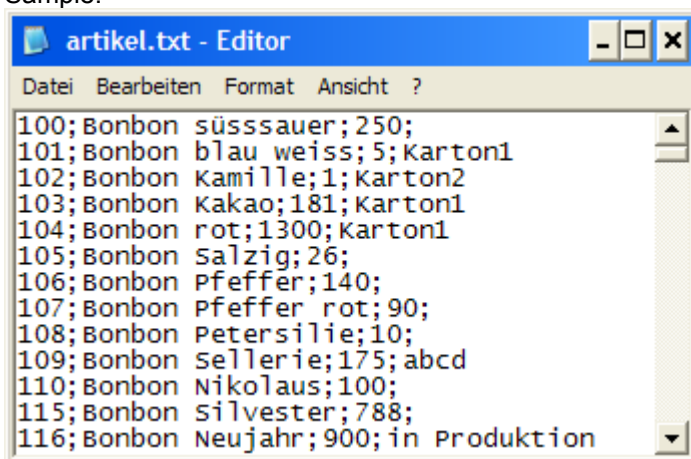
Description: Uploaded HOST file with article information
Data Format: CSV / XLS exported file
Field Delimiter: ; (Semikolon)
Block End CR LF

Note: Software will use it automatically (and show values from file into display) if the file is uploaded in the handheld computer. If there is no valid HOST file, the software will work without data.

Field Records:

Field 01: Article No
Field 02: Article Text
Field 03: Last Asset (or free definable via SETUP menu)
Field 04: Storage Location

Sample:



```
artikel.txt - Editor
Datei Bearbeiten Format Ansicht ?
100;Bonbon süssauer;250;
101;Bonbon blau weiss;5;Karton1
102;Bonbon Kamille;1;Karton2
103;Bonbon Kakao;181;Karton1
104;Bonbon rot;1300;Karton1
105;Bonbon Salzig;26;
106;Bonbon Pfeffer;140;
107;Bonbon Pfeffer rot;90;
108;Bonbon Petersilie;10;
109;Bonbon Sellerie;175;abcd
110;Bonbon Nikolaus;100;
115;Bonbon Silvester;788;
116;Bonbon Neujahr;900;in Produktion
```

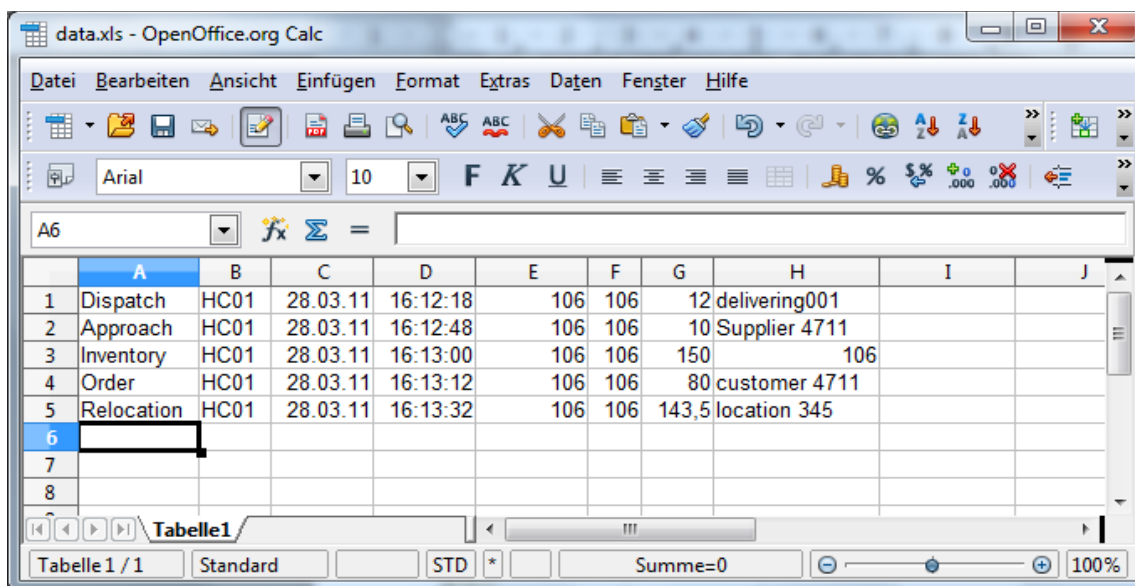
Input Data: /TEMP/DATA.XLS

Description: Will be automatically generated with input data
Data Format: CSV / XLS file
Field Delimiter: ; (Semikolon)
Block End: CR LF

Field Records:

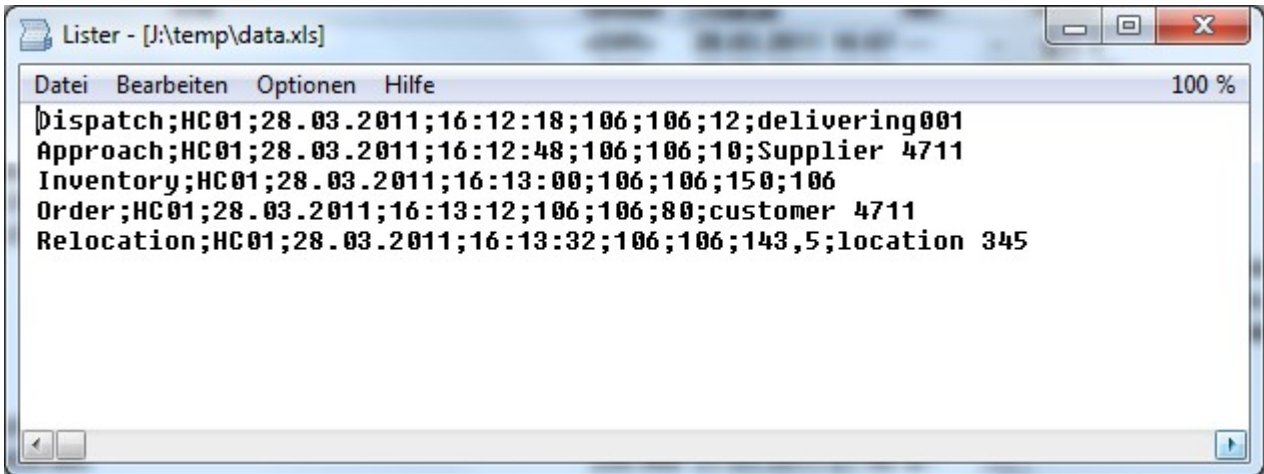
Field 01: Input Type
Field 02: User
Field 03: Date
Field 04: Time
Field 05: Art No
Field 06: Storage Place (value from field 04 article text or empty)
Field 07: Input Value
Field 08: Additional input first form - depending on Input type

Sample data file with Office Excel / OpenOffice Calc – imported file:



	A	B	C	D	E	F	G	H	I	J
1	Dispatch	HC01	28.03.11	16:12:18	106	106	12	delivering001		
2	Approach	HC01	28.03.11	16:12:48	106	106	10	Supplier 4711		
3	Inventory	HC01	28.03.11	16:13:00	106	106	150	106		
4	Order	HC01	28.03.11	16:13:12	106	106	80	customer 4711		
5	Relocation	HC01	28.03.11	16:13:32	106	106	143,5	location 345		
6										
7										
8										

Sample data file with simple ASCII editor:



Note: download this file to your local PC for further data processing. Do not miss to delete this file after correct downloading the input data to the PC.

Installation at a Handheld Device

Step 1: Upload the EXE programm to your handheld computer

Save the software to a folder you want.

Step 2 - optional: Upload article file to your handheld computer

/TEMP/ARTICLE.TXT. Please note data format in this documentation.

Step 3: Open Windows Explorer at your handheld and start EXE programm.

Step 4 - after finished data input: download the input data file to your PC

/TEMP/BUCHUNG.XLS. Refer section → files for further information.

Installation at a standard PC under WIN XP / WIN32

For test and trail you can install and use the software at your Windows PC. Note following steps:

Step 1: Create a folder at drive C: or D: for the software

Step 2: Save the exe programm into this folder.

Step 3: Create a folder /temp at the same drive you did step 1!!!

Step 4 - optional: Save a article file into the /temp folder of step 3.

Step 5: Start the software by clicking the EXE file

Step 6 - after finished data input: you will find the input data as BUCHUNG.XLS inside the /TEMP folder

Note: for running this software at your PC, you need the Microsoft DOT NET framework 2.0 or higher on your PC. Otherwise you will see an error message. You can download and install the framework vom the MS website!

Please keep in mind: running this software at your local PC is not the main aim. It is a bit tricky to use the menus with mouse and ENTER key - because the software is designed for a handheld device. But for testing - it will run at your PC too!

More Information

Screenshots show samples. Information without warranty. If you have questions, if you want to buy a product ID - please contact our sales team:

AE SYSTEME www.terminal-systems.de
Am Güterbahnhof 15
D-31303 Burgdorf / Hannover
Germany
Mail: info@terminal-systems.de
