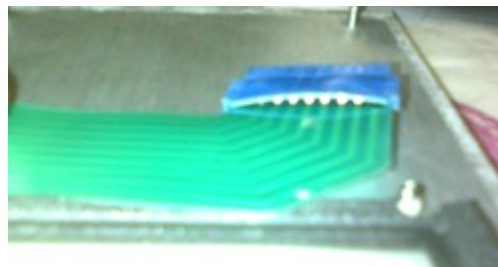
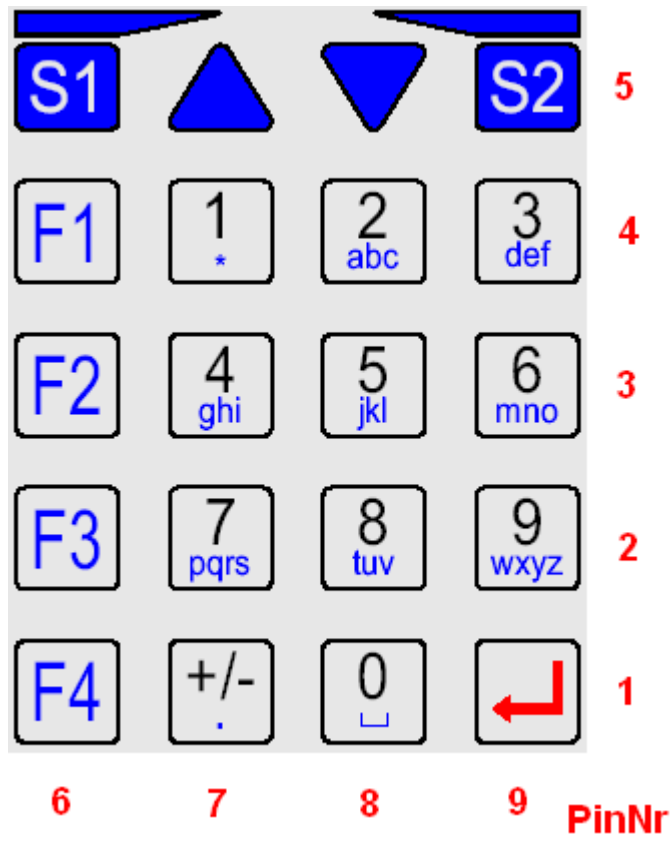


TRM816 – Matrix Key Usage



9 pin connector pinout TRM816:

	Pin 1 (IN)	Pin 2 (IN)	Pin 3 (IN)	Pin 4 (IN)	Pin 5 (IN)
Pin 6 (Out)	F4	F3	F2	F1	S1 (ESC)
Pin 7 (Out)	+/-	7	4	1	Up
Pin 8 (Out)	0	8	5	2	Down
Pin 9 (Out)	Enter	9	6	3	S2 (BS)

9 pin connector pinout TRM416:

	Pin 1 (IN)	Pin 2 (IN)	Pin 3 (IN)	Pin 4 (IN)	Pin 5 (IN)
Pin 6 (Out)	9	8	7	0	6
Pin 7 (Out)	4	3	2	5	1
Pin 8 (Out)	F4	F3	F2	+/-	F1
Pin 9 (Out)	Down / LCD	UP / LCD	BS / LCD	Enter	F5

Position with LCD are used for changing LCD contrast also! (If supported from baseboard.)

Technical information maybe changed in future versions. Information without warranty.