



## Application Sample: Inventory for cars and vehicles

A white paper about a special kind of mobile data collection



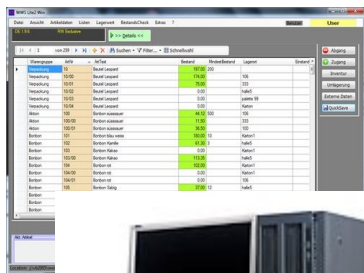
### Mission:

- Inventory, data collection and administration of mobile equipment, located at several stations in decentral use, white paper based on cars and movable goods
- Describes mobile data collection at local / decentral place
- Shows data transfer and data processing with central IT
- Target: get information about current assets at every location place
- Optionally with our stock and inventory system AE WWS Lite Win – a PC software for inventory and administration

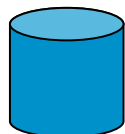


## Step 1 [central IT]: Create and Export Inventory Host files for every location

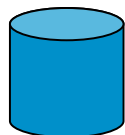
PC Software WWS Lite Win



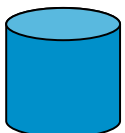
Central IT, Administration



Location 1



Location 2



Location n

- Inventory HOST file for every location
- Contains relevant information about stored stuff at location, e.g. cars / vehicles
- Exported file by central administration IT
- Mobile data terminal MDT uses inventory HOST file during manual input process (relevant information are shown inside the display)
- FTP Upload Inventory HOST file in MDT System
- Standard data format XLS / CSV, delimiter ;

### Inventory HOST File for every location, sample

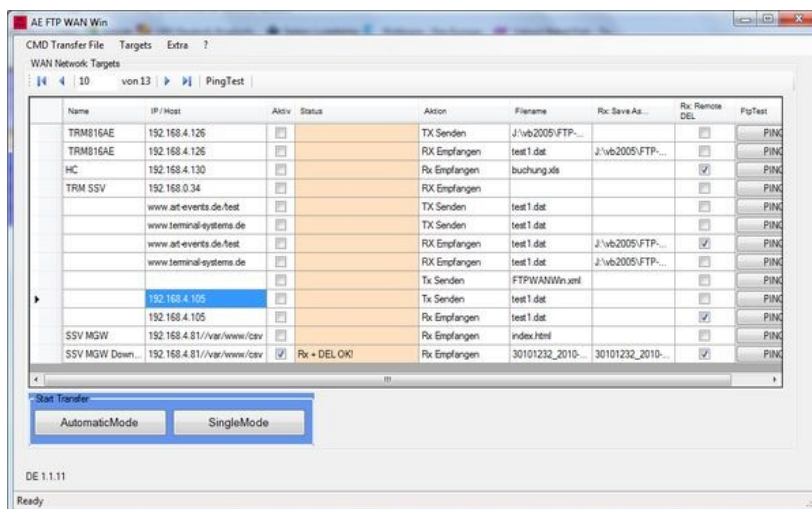
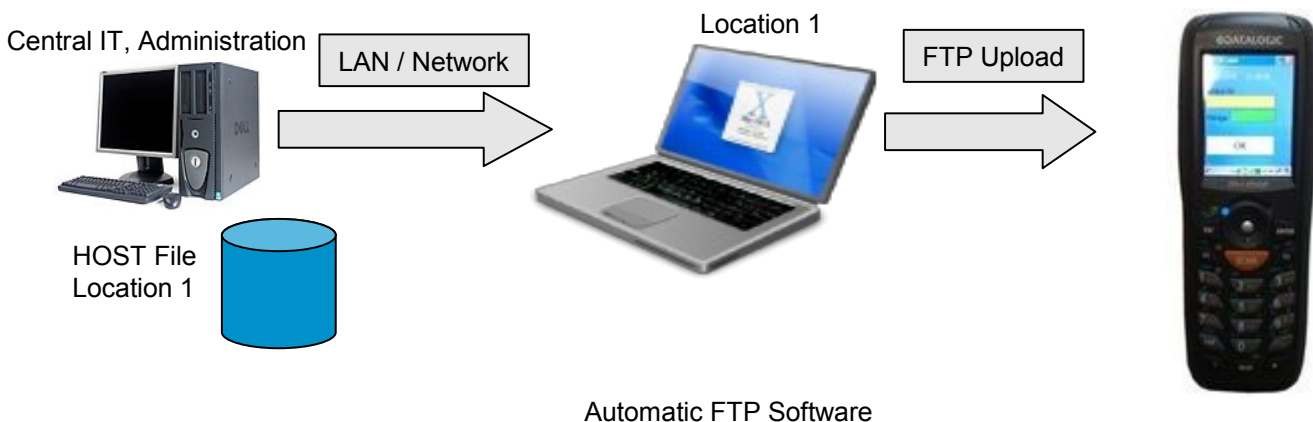
	A	B	C	D	E	F
1	Barcode ID	Text / Car ID	Car ID	Location		
2	10001	BMW 1er, black,	H-AE 3454	Park North A1		
3	10002	BMW 3er, red signal	CE-DT 854	Park North A1		
4	10003	Volvo V70, Coupe white	HH-TT 5946	Park North A1		
5	10004	VW Passat CC, Topless brown	WOB- DA 4156	Park North A1		
6						
7						
8						
9						
10						
11						

Pictures show samples. Technical information without warranty.





## Step 2 [Location x]: FTP Upload Inventory Host File



- Inside location: data access via LAN / Network to inventory HOST file for current location
- FTP upload inventory HOST file into mobile data terminal MDT system
- Software FTP upload, e.g. AE FTP COMM Box for automatic / userless data transfer between Windows PC and MDT system

Pictures show samples. Technical information without warranty.



## Step 3 [Location x]: Mobile Data Collection with MDT System



Mobile Data Terminal MDT



Roughed barcode labels



### Mobile data collection with MDT system

- Input / selection current location
- Barcode scan ident code, e.g. car ID no
- Display information from inventory HOST file: current typ and KFZ sign
- User enters with OK button if shown data correct

### Data save: Input data with barcode ID + location + date + timestamp

- Data format XLS / CSV, delimiter ;

### Programming work ToDo:

- Data collection software for MDT system
- Combination from existing WinCeMobileData software + some additional fields

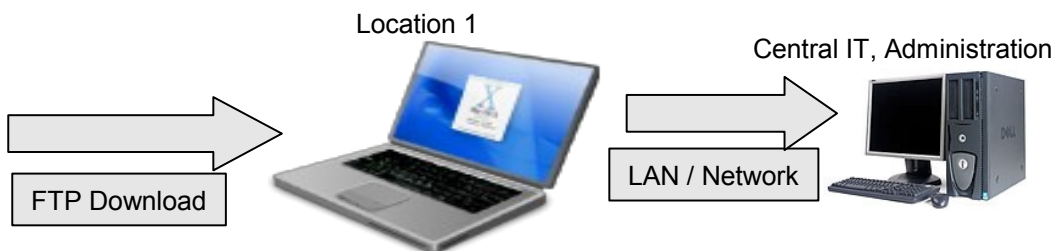
Software Note: for security reasons it is not possible to scroll inside inventory HOST file!

Pictures show samples. Technical information without warranty.





## Step 4: Data Transfer of Input Data, File data.XLS



- Data transfer input data from MDT system to local IT system by using FTP
- Data transfer from location to central administration IT by using LAN / network
- Import and data processing of input data inside central IT of administration
- Location information and time stamp are automatically added into input data
- Empty or not existing fields: No existing cars / vehicles!

### Input data for location, sample:

pkwxls.xls - OpenOffice.org Calc

File Bearbeiten Ansicht Einfügen Format Extras Daten Fenster Hilfe

	A	B	C	D	E	F	G	H	I
1	Type	User	Date	Time	Barcode ID	Location			
2	inventory	HC01	06.06.11	08:12:00	10001	Parkplatz North A1, 100			
3	inventory	HC01	06.06.11	08:13:00	10002	Parkplatz North A1, 105			
4	inventory	HC01	06.06.11	08:14:00	10003	Parkplatz West 5, 55			
5	inventory	HC01	06.06.11	09:20:00	10004	Maintenance			
6									
7									
8									
9									
10									
11									

Tabelle1 / Tabelle2 / Tabelle3

Tabelle 3 / 3 PageStyle\_Tabelle3 STD \* Summe=0 100%

Pictures show samples. Technical information without warranty.



## Barcode Labels - For roughed and outdoor use

- For using nearly everywhere
- For rough conditions
- Secure and safe
- Individual formats possible
- Easy fixing
- Individual logos and designs
- For long time use



**Material:** PU Acrylatfolie, elektronenstrahlvernetzt,

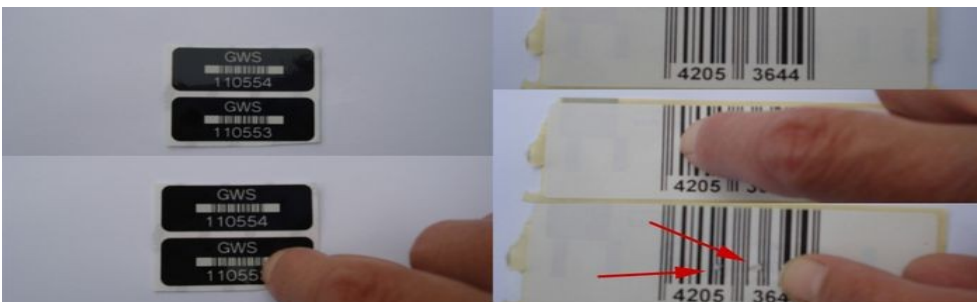
**Kleber:** Acrylatkleber, permanent klebend,

**Abmessungen (Standard):** 40x15mm o. nach Anforderung

**Farbe:** schwarzer Grund, weiße Schrift/Barcode, Logoplatzierung

Barcode labels for nearly every. Even at cars or vehicles, in dust or dirt or wherever you need clear identifications: roughed barcode labels in highest quality! See pictures at left side, see comparison between special roughed barcodes and normal standard labels.

Special roughed labels also fulfill requirement of security and safety: automatic damage in tying of removal, including UL certification (MH18055) as label for car section (german KFZ Bundesamt) and as type label for military use (Bundesamt Wehrtechnik und Beschaffung), temperature resistant DIN50017 SWF + DIN50016 SFW 2,0S.



See different reaction of labels against mechanical use. Normal labels get damage against small scrapers and marks. Special roughed labels show no damage!



Colour damages can destroy the readable function of normal standard barcode labels. No damages in special roughed labels!

Pictures show samples. Technical information without warranty.

# - PDC - MDC - Barcode - Transponder - Sensors -



## Deliverings

### Pos 01: FTP Data Transfer Software for automatic / userless transfer

Software for MS Windows XP/Vista/7, 32/64bit. Available as DE or EN Language version.

### Pos 02: Mobile Data Terminals MDT systems for mobile data collection

For mobile data collection at location. Including wireless LAN interface (WiFi) for fast transmission

### Pos 03: Base Station MDT for accu recharging, optionally including LAN interface

### Pos 04: Data Collection Software for MDT System

Version of existing MDT software WinCeMobileData with some individual changes. See here for description of the basic version: <http://www.terminal-systems.de/english/wince-mobiledata1-en.htm>

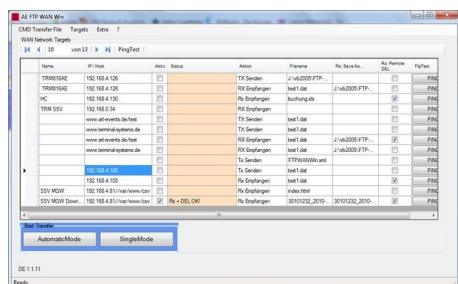
### Pos 05: Roughed Barcode Labels

### Pos 06 – Optionally: Inventory and warehousemanagement software for central PC

Stationary software for data processing and central administration of the collected data, e.g. our software package <http://www.terminal-systems.de/english/wws-lite-win-en.htm>

### Customer Requirements:

- Separately inventory HOST files for every location
- PC system in every location with access to inventory HOST files
- WLAN / WiFi transmission between local PC and MDT system or:
- Network connection between local PC and MDT system via network base station
- Data processing software for process the input data of the MDT system



Pictures show samples. Technical information without warranty.



- PDC - MDC - Barcode - Transponder - Sensors -



## AE SYSTEME – We are Offering Solutions in Embedded IT....



AE SYSTEME - we are experts in EMBEDDED IT! Embedded IT indicates powerful PC technology in non office environment. For data capturing, industrial data processing, attendance and security solutions in in harsh up to extremely environment.

We are offering the "specialized" computers, e.g. terminal systems, handhelds, industrial PC and more. We brings preconfigured applications and tools - and gives you the freedom to create and fulfill your own desired application. For solutions in production, in stock, at vehicles, at machines or wherever you need rugged and powerful technology in your conditions.

We are a typical german company. Reliability and dependability are extremely important for our business and the bottom of every mission statement for our customers. We was founded in 1999, located in Hannover / Germany. In the beginning we sold existing pure embedded IT technics. In 2006 we moved into a new building in Burgdorf - nearby Hannover. Since 2008 we expanded our product range from pure hardware equipment up to complete solutions, tools and all the useful things which are needed to reach successful projects in industrial and business environment.

Our company represents the wide knowledge of powerful embedded hard- and software engineering and offer optimized solutions for customer requirements of industrial IT systems regarded on MADE IN GERMANY facts. Some of our solutions are high specialized for german spoken markets - others are usable for worldwide applications. If you miss something, if you have a questions please feel free to contact our sales office for details. We will be glad to assist you inside your project!

**Current Infos and Updates - refer:  
[www.terminal-systems.de](http://www.terminal-systems.de)**

Pictures show samples. Technical information without warranty.

AE-SYSTEME  
Am Güterbahnhof 15  
D-31303 Burgdorf

Tel.: +49-(0)5136/80 24 21  
Fax: +49-(0)5136/977 63 68

[info@terminal-systems.de](mailto:info@terminal-systems.de)  
[www.terminal-systems.de](http://www.terminal-systems.de)