

configure instead of programming

XML Code Processor



The mission: no more programming!

Complicate programming was yesterday. Instead of difficult creating program code, acquiring C, C++ or any other artificial language, learning how to operate a compiler - today an individual application will be quick and easy configured. But how?

The solution: XML code processor!

The XML Code Processor is a high-capacity XML interpreter for industrial computers and terminal systems. As an interpreter he translates a data file with XML content /clear text briefings into program code. The translation works during runtime, so there is no need for compiler or any expensive development tools.

More usability: simple configuration - instead complicate programming - especially for non IT experts!

An user-friendly data file in XML data format forms the basis of the configuration. The program configuration is represented through data fields good readable in clear text in the editor. (XML is an open data format, it allows computers to exchange information. XML data files can be read and written by any computer without any difficulties.)

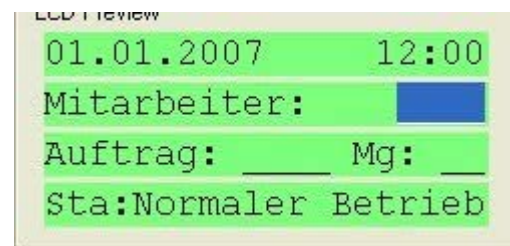
The applications

The XML Code Processor is qualified for quick and uncomplicated generation of various applications, e.g.

- Data collection: capture of operating and production data, staff work time logging or order and delivery information
- Automation: control and run plant and machinery, automat.
- Incl. Barcode or RFID Transponder support, Hardware support for on board CAN or Digital IO

Further information about the XML Code Processor with detailed descriptions, documentation and updates you will find here:

<http://www.terminal-systems.de/xml-cp/index-e.htm>



```
<?xml version="1.0" encoding="Windows-1252" ?>
- <NewDataSet>
- <datacode>
  <Nr>2</Nr>
  <Object-ID>Mitarbeiter</Object-ID>
  <CLR>1</CLR>
  <Text1-row>1</Text1-row>
  <Text1-col>1</Text1-col>
  <Text1>01.01.2007 12:00</Text1>
  <Text2-row>2</Text2-row>
  <Text2-col>1</Text2-col>
  <Text2>Mitarbeiter:</Text2>
  <Text3-row>3</Text3-row>
  <Text3-col>1</Text3-col>
  <Text3>Auftrag: ____</Text3>
  <Text4-row>3</Text4-row>
  <Text4-col>15</Text4-col>
  <Text4>Mg: __</Text4>
  <Text5-row>4</Text5-row>
  <Text5-col>1</Text5-col>
  <Text5>Sta:Normaler Betrieb</Text5>
  <Input-row>2</Input-row>
  <Input-col>17</Input-col>
  .....
</datacode>
```

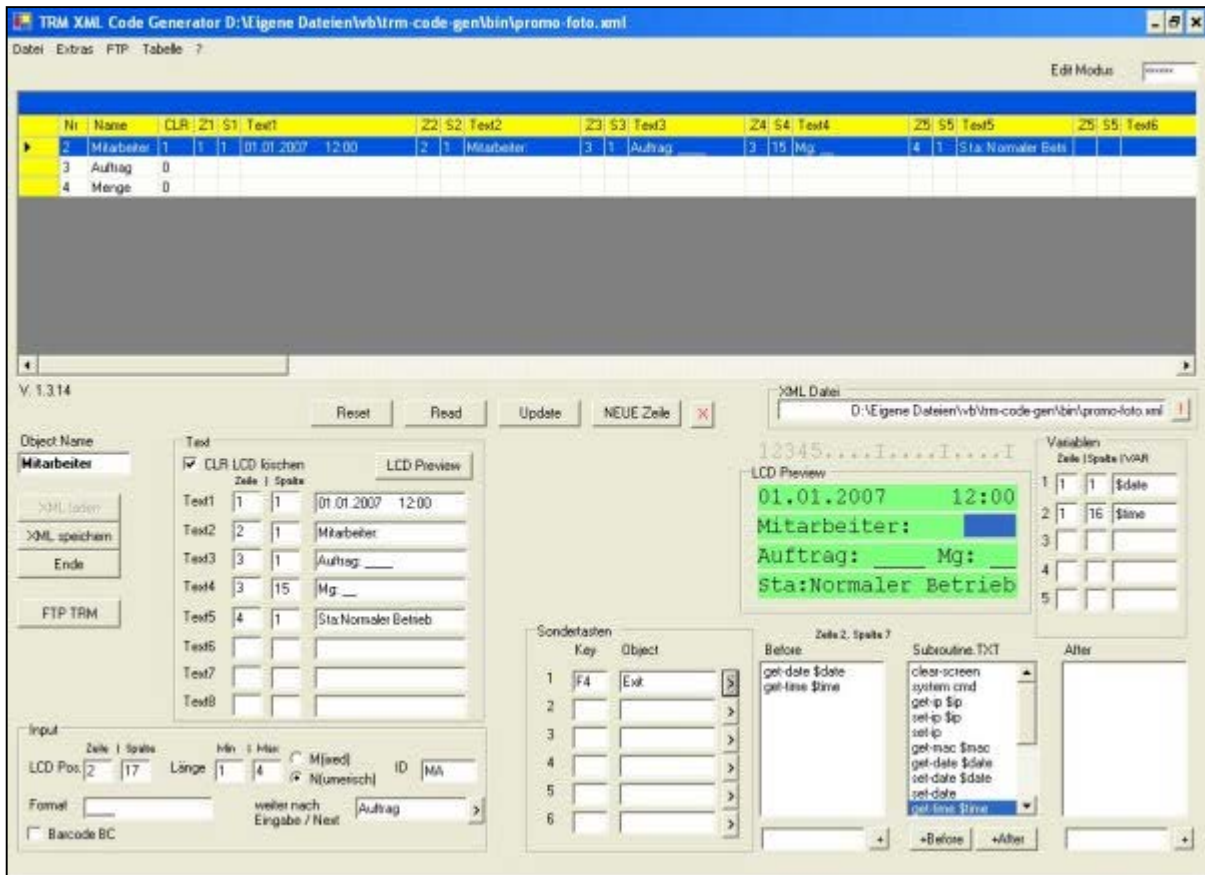
AE-SYSTEME
Am Güterbahnhof 15
D-31303 Burgdorf

Tel.: +49(0)5136/80 24 21
Fax: +49(0)5136/977 63 68
Germany

info@terminal-systems.de
www.terminal-systems.de

configure instead of programming

XML Code Processor

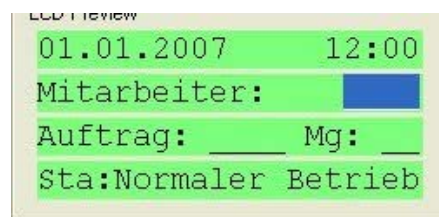


The counterpart: The XML Code Generator

The writing of the XML configurations files can be done with a any text editor. Much more easier is the use of the XML Code Generator to create the configurations data files:

The XML Code Generator is a PC program to create and to edit XML configurations data files!

- Creating XML configuration files with MS Windows™ at desktop PC
- User-friendly operation and graphical user prompting
- LCD Preview and Simulations Mode
- Integrated FTP Client for data transfer to TRM / hardware
- Automatic field list for XML Code Processor
- Wizzard Mode with hints and input assistance
- Including Barcode or RFID Transponder support
- Subroutines as application programming interface (API) for own software



Preview TRM/416



Preview TRM/816

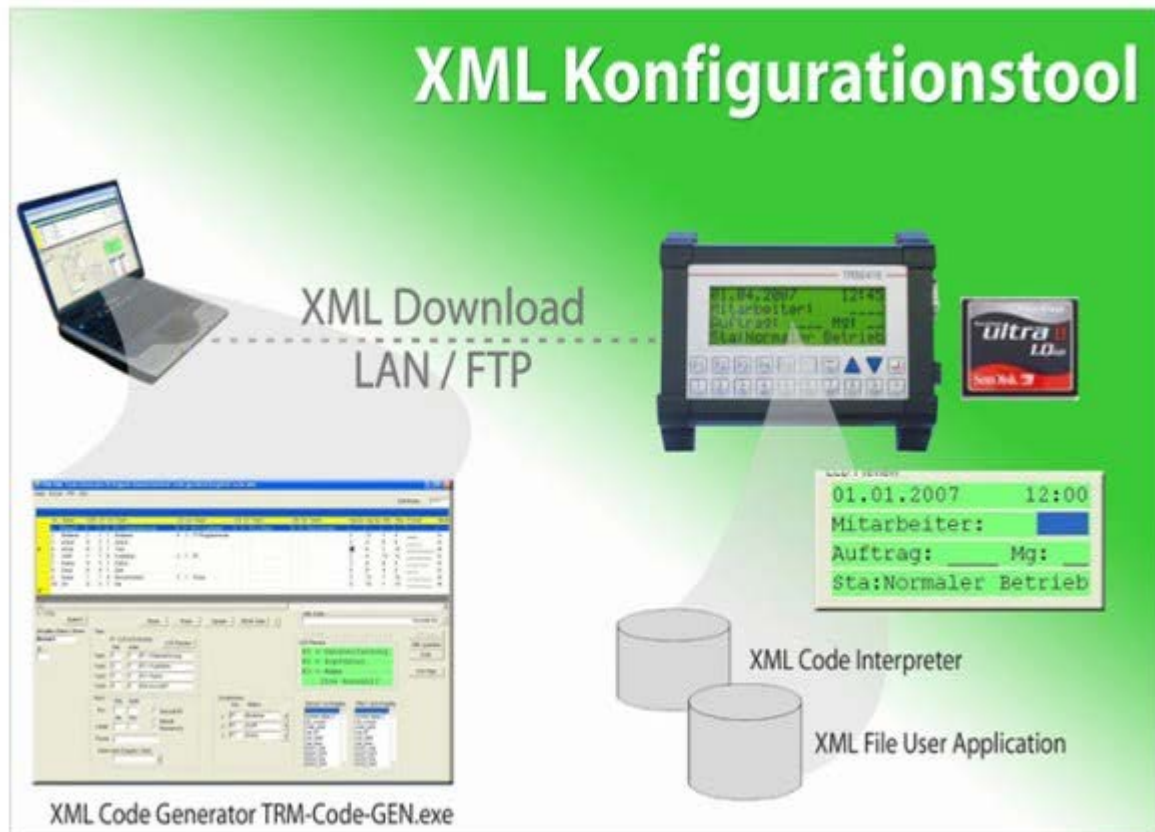
AE-SYSTEME
Am Güterbahnhof 15
D-31303 Burgdorf

Tel.: +49(0)5136/80 24 21
Fax: +49(0)5136/977 63 68
Germany

info@terminal-systems.de
www.terminal-systems.de

configure instead of programming

XML Code Processor



XML configuration tool / XML Code Processor on the the Terminal - hardware enabling:

- 32bit x86 PC system
- Operating system linux with framebuffer device
- Other operating systems like e.g. Windows CE, Windows Mobile are projected
- supports alphanumeric, text and graphical display
- keypad or touch screen for user input
- data medium or min. 32MB Flash memory
- TCP / IP protocol stack with Ethernet LAN Network interface or Wireless / WLAN
- Strongly recommended: serial port and various IO devices to connect peripheral equipment, like barcode scanner, RFID transponder, printer and more.

The XML Interpreter / XM Code Processor for interpretation and execution of configuration data files can be port to different computer platforms. The currently porting contains linux devices with a framebuffer support - please have look at the TRMxx industrial terminals by SSV Embedded Systems.

An extension of additional operating systems is projected - Windows CE® about end 2008.

AE-SYSTEME
Am Güterbahnhof 15
D-31303 Burgdorf

Tel.: +49(0)5136/80 24 21
Fax: +49(0)5136/977 63 68
Germany

info@terminal-systems.de
www.terminal-systems.de